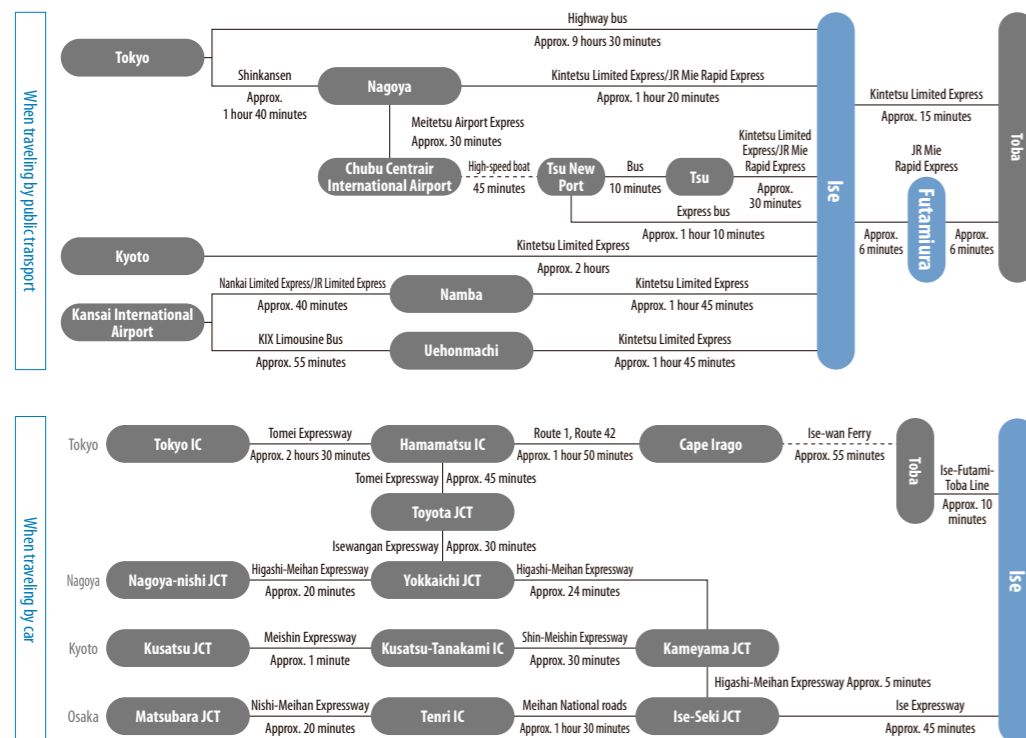


Information

See the Access map for Ise and Transportation Quick Help Chart for info on how to travel around the city!



Access Chart



Highway bus information

Mie Kotsu Sanco Reservation Center ☎ 059-229-5555	
Ise → Yokohama → Tokyo	Ise-shi-ekimae Yokohama Station East Exit Ikebukuro Station East Exit
Toba #2 Bus	Dep. 20:50 → Arr. 06:15
Toba #4 Bus	Dep. 22:00 → Arr. 05:50 → Arr. 07:06
Mie area:	0596-25-7131
Tokyo → Yokohama → Ise	
Ikebukuro Station East Exit Yokohama Station East Exit Ise-shi-ekimae	
Toba #1 Bus	Dep. 21:20 → Arr. 06:55
Toba #3 Bus	Dep. 22:10 → Arr. 23:45 → Arr. 07:30
Mie area:	048-643-5520
Aoki Bus ☎ 0598-49-7510	
Ise → Tokyo	Kintetsu Ujijamada Station Tokyo
Dep. 20:25	→ Arr. 06:36
Tokyo → Ise	Tokyo Kintetsu Ujijamada Station
Dep. 22:40	→ Arr. 08:20
WILLER EXPRESS ☎ 0570-200-770	
Ise → Tokyo → Yokohama	Ise-shi-ekimae Shinjuku Station South Exit Yokohama Station East Exit
Dep. 20:40	→ Arr. 05:40 → Arr. 06:40
Saitama → Tokyo → Ise	Omiya Station Ikebukuro Ise-shi-ekimae
Dep. 20:25	→ Dep. 21:20 → Arr. 06:55

From	To	Mode	Time
Ise Station	Ugata Station	Kintetsu	38 min
		Sanco Bus	55 min
Toba Station	Ugata Station	Kintetsu	13 min
		Sanco Bus	37 min
		CAN Bus	60 min
Mt. Asama Peak	Toba Station	*By Ise-Shima Skyline	20 min
		*By Ise-Shima Skyline	30 min
Kawasaki	Kawasaki	Sanco Bus	9 min
		Sanco Bus	58 min
Futamiura	Futamiura	JR	6 min
		Sanco Bus	22 min
		CAN Bus	42 min
Naiku	Naiku	Sanco Bus	12 min
		Sanco Bus	39 min
		*By Ise-Shima Skyline	15 min
Geku	Geku	Sanco Bus	2 min
		Sanco Bus	59 min
		*By Ise-Shima Skyline	25 min
Ujijamada Station	Ujijamada Station	Kintetsu	1 min
		Sanco Bus	3 min
		CAN Bus	2 min

Visit the Rakuraku Ise Moude website at www.rakurakuise.jp for info on public transport access and parking around Ise Jingu.

*Times listed below are approximations and so should be used for reference only. For details, please contact the relevant transport provider.
*See page 20 for information on the Sango Bus between the Isezugaya Station and the top of Mt. Asama.

If a large-scale disaster strikes Ise City...

- 1. First, find a safe place**
 - Large earthquakes can cause tsunamis to be generated. Evacuate to higher land or to a tsunami evacuation shelter. (Evacuation shelter locations can be found on the maps on pages 12, 14, 18, 19, and 20.)
 - Obtain correct information, and stay in your hotel or at an evacuation shelter until the situation calms down.

- 2. How to obtain correct information**
 - Using a smartphone or other mobile device
 - Visit the Ise City website for emergency info and a list of evacuation shelters. Click on the automatic translation buttons at the top of the page to display the content in English, Portuguese, Simplified Chinese, Traditional Chinese, Korean, German, Italian, French or Thai.
 - Visit BOSAIMIE.jp for info on traffic, damages, and evacuation shelters. Available in Japanese, English, Portuguese, Simplified Chinese, Traditional Chinese, Korean, German, Italian, French or Thai.

- 3. How to let loved ones know you are safe**
 - A disaster message line is available by dialing "171".
 - Visit the Disaster Message Board web 171 from your smartphone or other mobile device and leave a message there. Site available in English, Chinese, and Korean.

Disaster Return-Home Support Stations stickers

Disaster Message Board web 171

References

- Ise City broadcasts emergency information throughout the city on the municipal disaster management radio system (Japanese language only).
- If a large earthquake strikes, the broadcast will provide information on intensity and deliver warnings. Broadcasts will continue even if a tsunami advisory or tsunami warning is issued and if evacuation advisories or orders are issued due to tsunami or flooding damage. This information will be posted on the Ise City website, and machine-translations can be displayed English, Portuguese, Simplified Chinese, Traditional Chinese, Korean, German, Italian, French and Thai.
- Ise City sends out emergency information notices using the "Area Mail" system.
- Area Mail is used to deliver emergency civil protection information such as evacuation information, tsunami advisories, tsunami warnings, large-scale terrorist attacks, etc. This information is delivered to all compatible mobile devices in a specific area through the municipal disaster management radio system. (Japanese language only. As of March 2019, information is delivered to NTT Docomo, AU, and Softbank devices.)

Tour Guides and Omotenashi Helper

Ise-san Tour Guide Association
Volunteer guides provide tours of Ise Jingu's Naiku and Geku.
Price: Free *Guests are responsible for the 1,000-yen fee for transport required to get to the shrine and 1,000 yen for lunch when tours take place between 12PM and 1PM.
How to apply: Contact by fax or through the website at least seven days ahead of time.
Phone/Fax: 0596-23-3323 (Gekumae Tourist Information)

Ise Omotenashi Helper
These helpers welcome pilgrims in wheelchairs and others requiring assistance in traversing stairs at Ise Jingu Naiku.
Price: From 5,000 yen *Depends on mobility and number of assistants required
*Service not available on Thursdays
How to apply: Contact by email, phone, or fax at least seven days before planned visit.
Phone: 0599-21-0550 (Ise-Shima Barrier-Free Tour Center) Fax: 0599-21-0585 Email: iseshima@barifuri.com

Contact Numbers

Tourist Information Offices	
Ise-shi Station Tourist Information	0596-65-6091
Geku-mae Tourist Information	0596-23-3323
Futamiura Tourist Information	0596-43-2331
Other Tourism Associations	
Ise City Tourist Association	0596-28-3705
Toba City Tourist Association	0599-25-3019
Shima City Tourist Association	0599-46-0570
Minami-ise Tourist Association	0599-66-1717
Ise-shima Tourism & Convention Organization	0596-44-0800
Ise-shi Station Baggage Storage	0596-65-6861

For inquiries about information found in this pamphlet please contact:
Ise City Tourism PR Division ☎ 0596-21-5565
Ise City Tourism Association ☎ 0596-28-3705